

# MALDIVES LAND AND SURVEY AUTHORITY

MINISTRY OF HOUSING AND INFRASTRUCTURE

Office (PABX): +(960) 3004300, Fax: +(960) 3004254

Ameenee Magu, Maafannu, Male', 20392, Maldives.

Email: survey@housing.gov.mv

Web: www. surveyofmaldives.gov.mv



<b>CONTROL POINT DETAILS</b>		<b>Station Number</b>	<b>PSM5799</b>
<b>Coordinate Information</b>			
<b>Geodetic</b>		<b>Grid</b>	
<b>WGS 84</b>		<b>UTM Zone 43</b>	
Lat:	<b>N4° 18' 20.3219"</b>	E:	<b>333985.051m</b>
Long:	<b>E73° 30' 14.5457"</b>	N:	<b>476074.863m</b>
Ellp Height:	<b>-92.820m</b>	Orth Height:	<b>1.376m MSL</b>
<b>Island Name:</b>	<b>AANUGAN'DUFINOLHU</b>	<b>Date:</b>	<b>22/03/2021</b>

*Monument description & method of survey:*

Type A Monument - Urban Configuration

Finish level is Approx. 100mm below ground.

GNSS Static Observation for more than 6hours 45mins and post processed to reduce coordinates.

Vertical height transferred by static processed vertical coordinate from PSM5797.

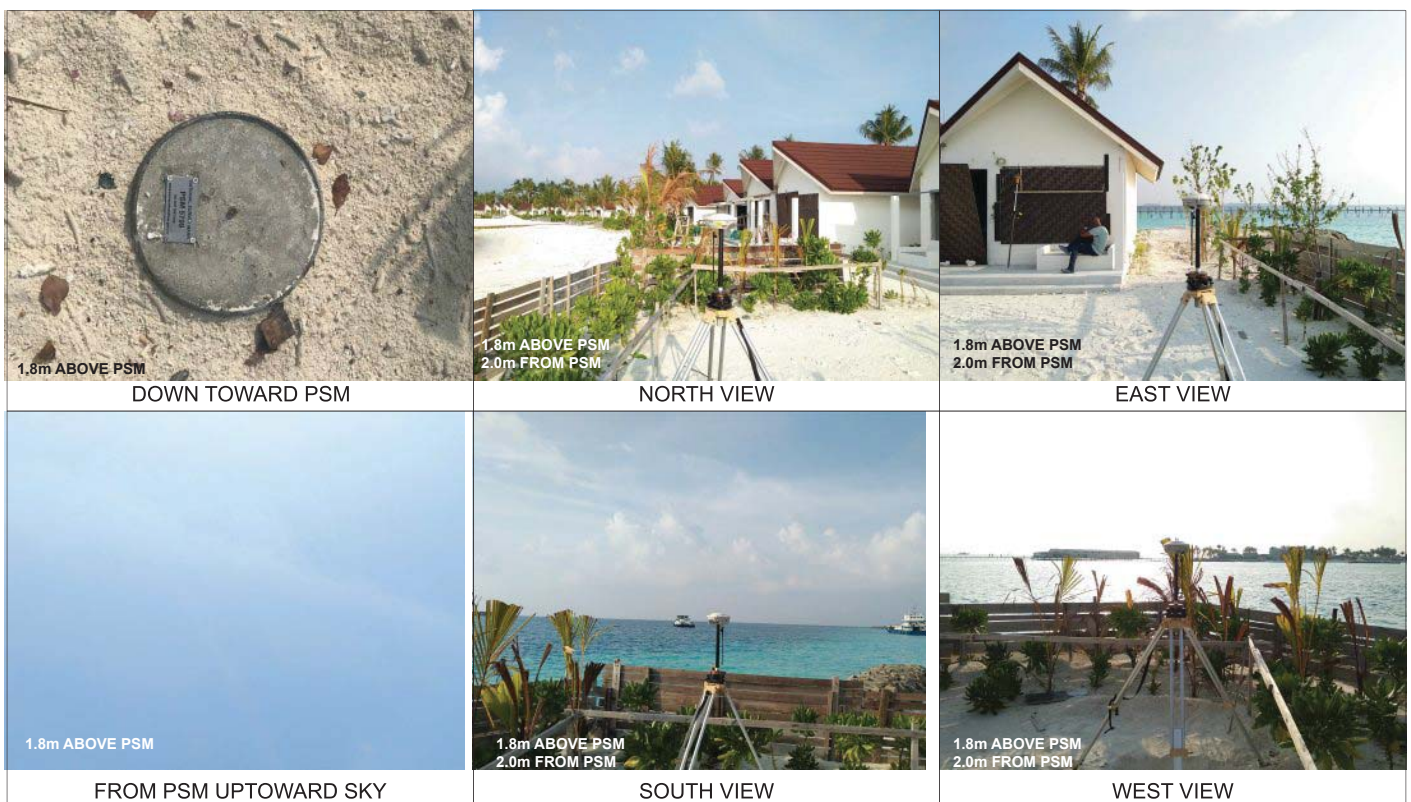
Vertical Datum (MSL) was adjusted by transferring MSL datum to PSM 5797 by RTK observation to water level.

PSM 5797 is in Aanugan'duhuraa in the same Lagoon.

*General site condition & access:*

- Easy Acces.
- Open area with open sky.
- Front porch of the South West beach villa

**Owner: AQUA BLUE INVESTMENT PVT LTD**

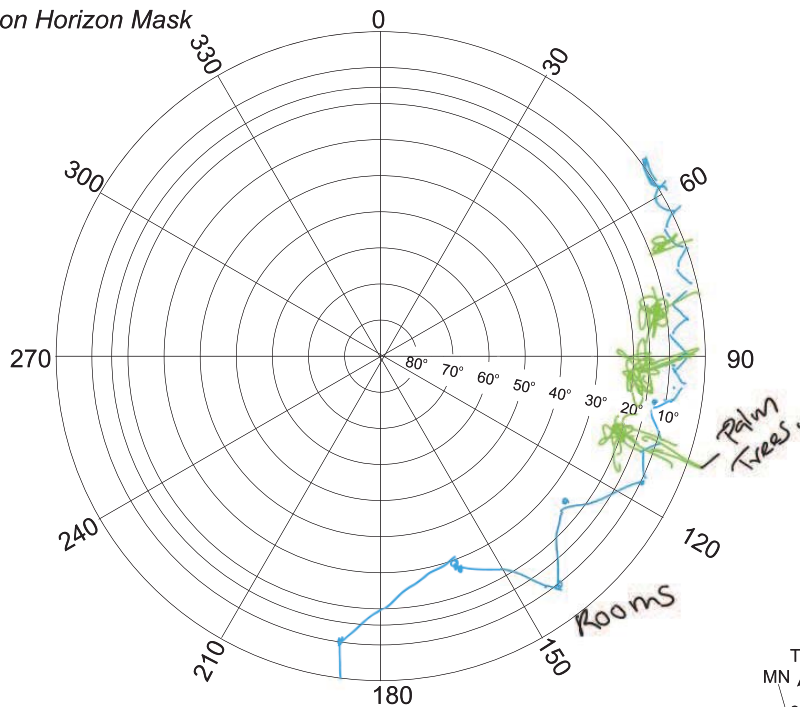


**SITE INFORMATION**

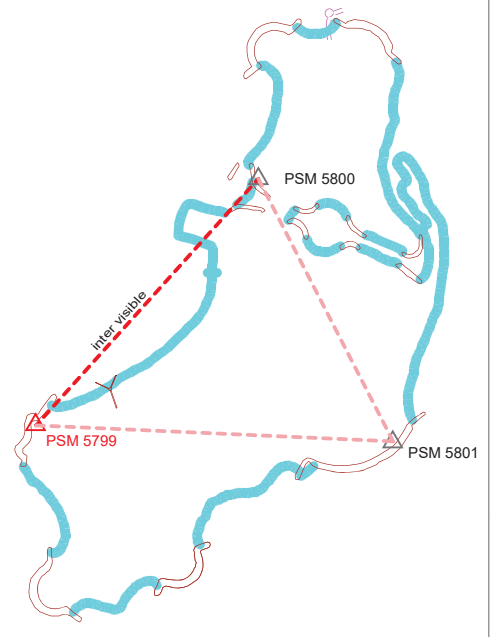
Station Number

PSM 5799

Station Horizon Mask



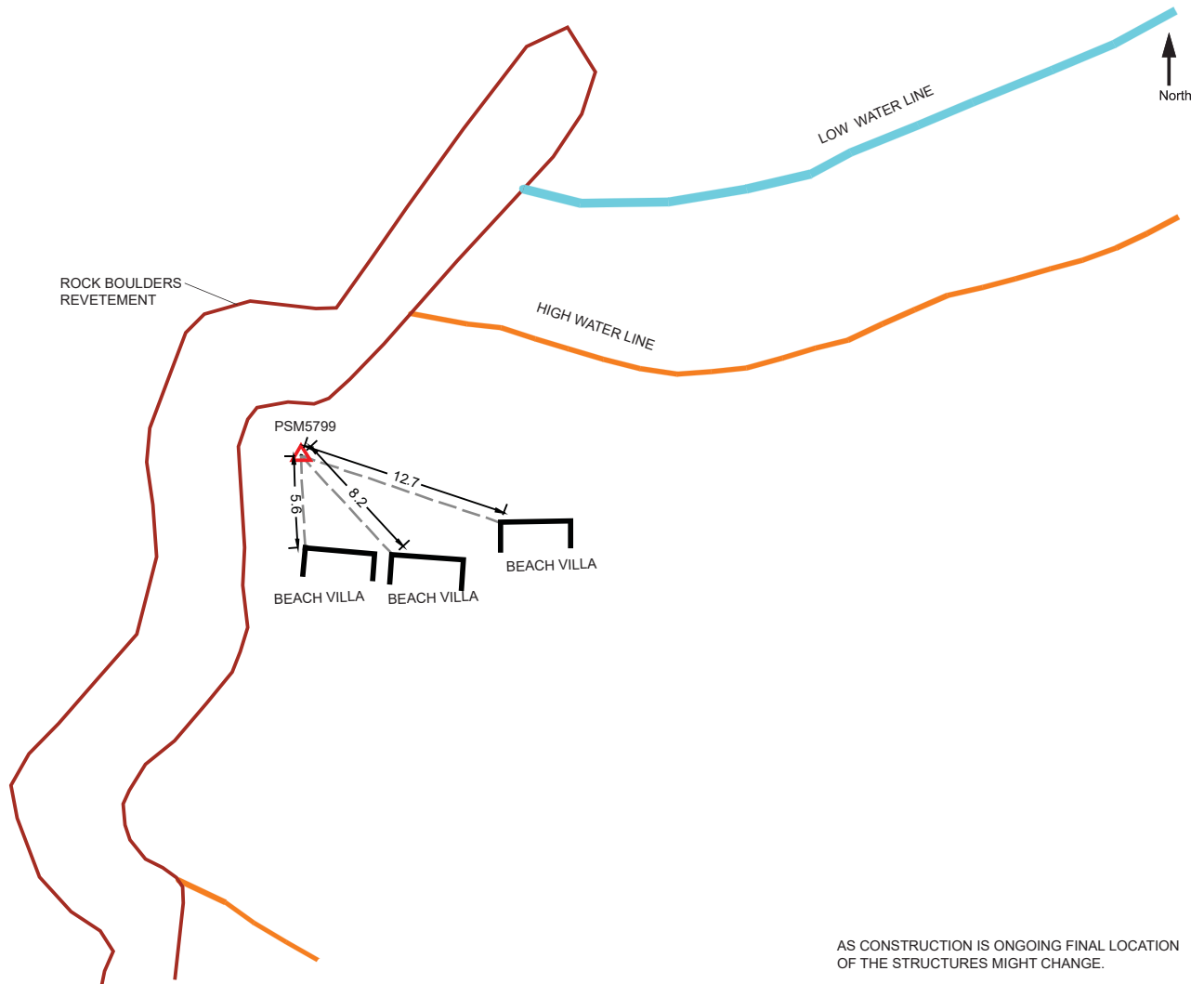
Locality



Height above Marker that horizon was mapped from 1.80 m

Magnetic Declination \_\_\_\_\_  
 Declination applied to this figure?  
 Yes  No

ROCK BOULDERS  
 REVETMENT



AS CONSTRUCTION IS ONGOING FINAL LOCATION OF THE STRUCTURES MIGHT CHANGE.

Sketched by: MUNATHI AFIMED

Scale: Not to scale

Date: 22/03/2021

# MALDIVES LAND AND SURVEY AUTHORITY

MINISTRY OF HOUSING AND INFRASTRUCTURE

Office (PABX): +(960) 3004300, Fax: +(960) 3004254

Ameenee Magu, Maafannu, Male', 20392, Maldives.

Email: survey@housing.gov.mv

Web: www. surveyofmaldives.gov.mv



<b>CONTROL POINT DETAILS</b>		<b>Station Number</b>	<b>PSM5800</b>
<b>Coordinate Information</b>			
<b>Geodetic</b>		<b>Grid</b>	
<b>WGS 84</b>		<b>UTM Zone 43</b>	
Lat:	<b>N4° 18' 27.0185"</b>	E:	<b>334171.137m</b>
Long:	<b>E73° 30' 20.5678"</b>	N:	<b>476280.186m</b>
Ellp Height:	<b>-92.944m</b>	Orth Height:	<b>1.252m MSL</b>
<b>Island Name:</b>	<b>AANUGAN'DUFINOLHU</b>	<b>Date:</b>	<b>22/03/2021</b>

*Monument description & method of survey:*

Type A Monument - Urban Configuration

Finish level is Approx. 100mm below ground.

GNSS Static Observation for more than 35mins and post processed to reduce coordinates.

Vertical height transferred by static processed vertical coordinate from PSM5797.

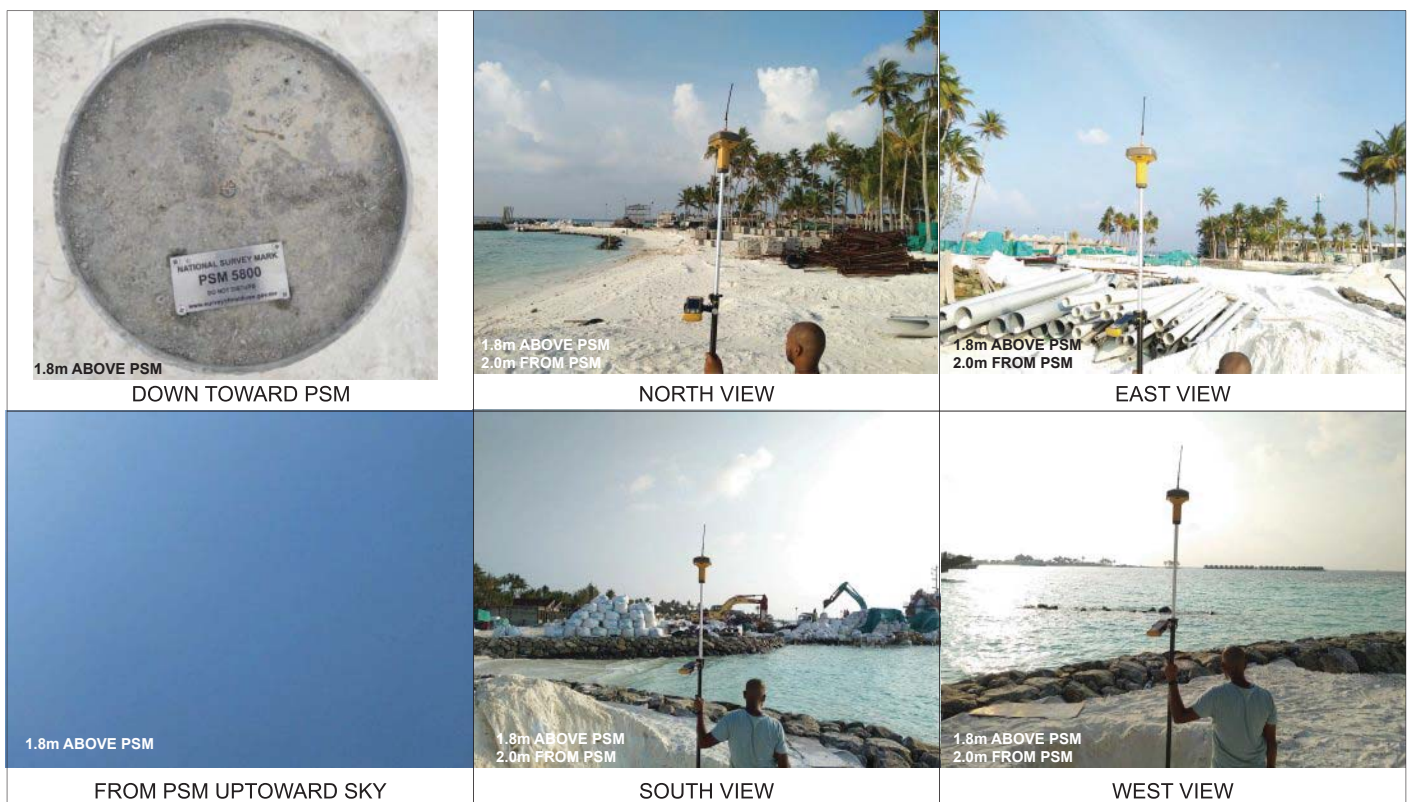
Vertical Datum (MSL) was adjusted by transferring MSL datum to PSM 5797 by RTK observation to water level.

PSM 5797 is in Aanugan'duhuraa in the same Lagoon.

*General site condition & access:*

- Easy Acces.
- Open area with open sky.
- No permanent structure is around so had to take measurement to Revetment crests.

**Owner: AQUA BLUE INVESTMENT PVT LTD**

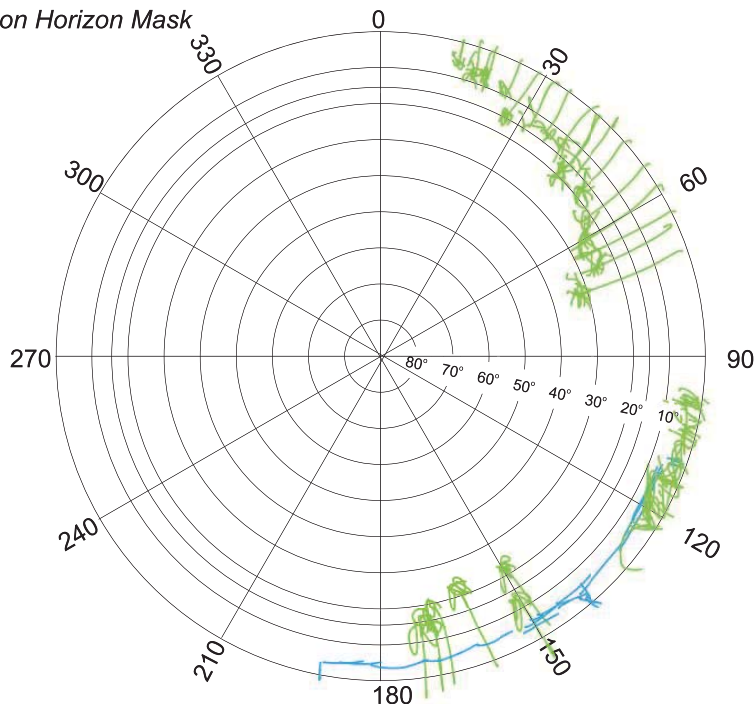


**SITE INFORMATION**

Station Number

PSM 5800

Station Horizon Mask

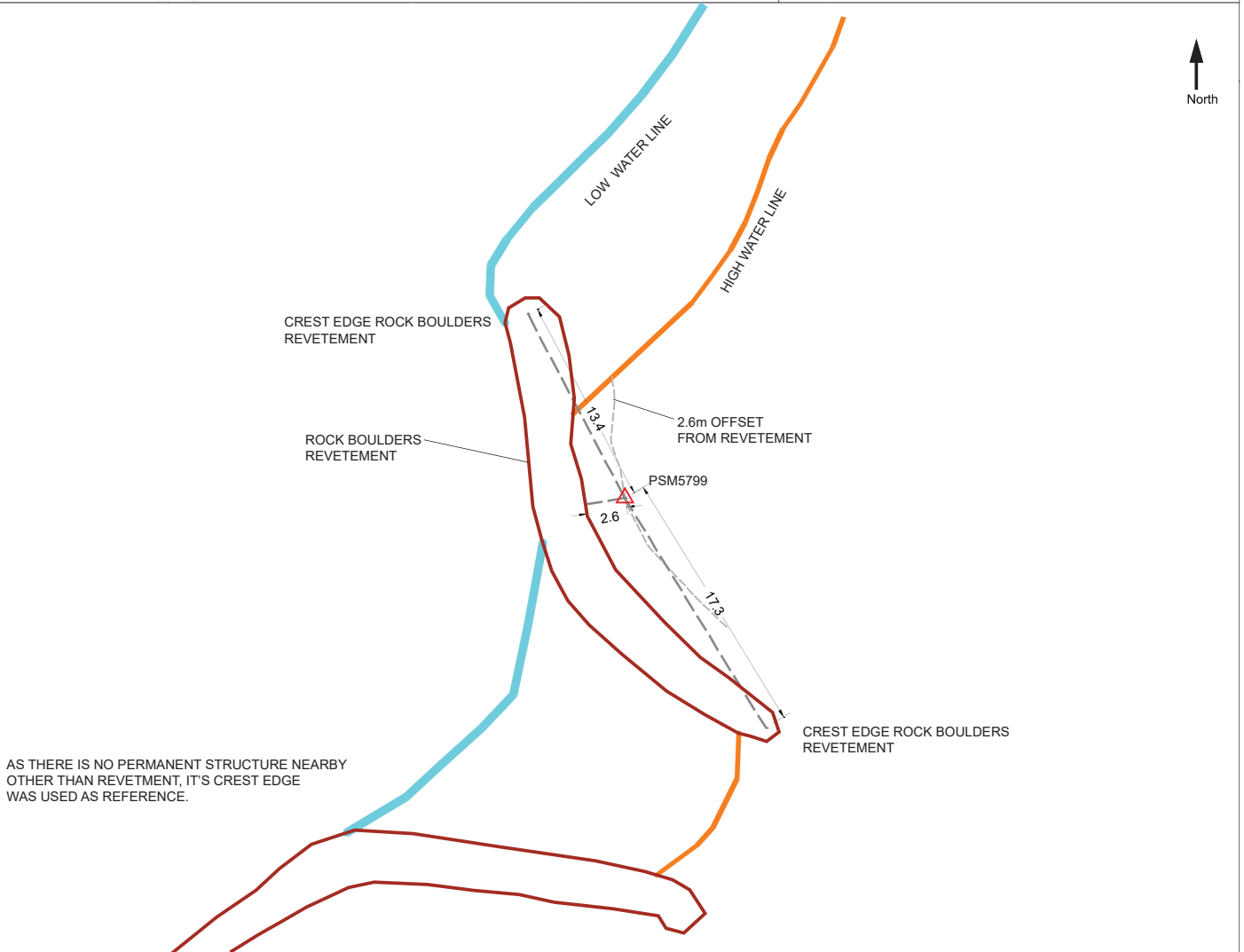
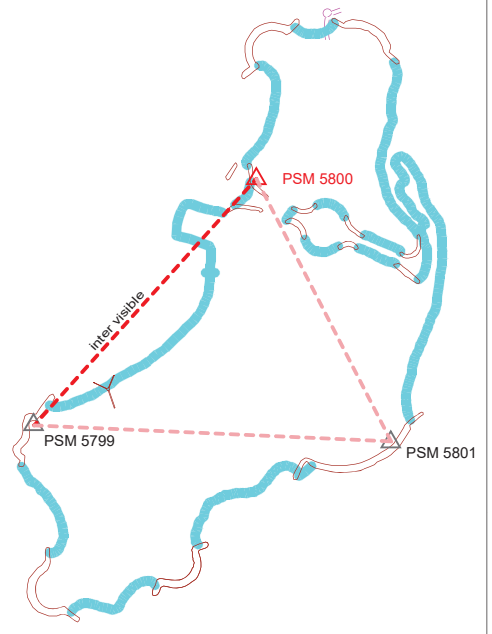


Height above Marker that horizon was mapped from 1.8 m

Magnetic Declination \_\_\_\_\_  
 Declination applied to this figure?  
 Yes  No



Locality



AS THERE IS NO PERMANENT STRUCTURE NEARBY OTHER THAN REVETEMENT, IT'S CREST EDGE WAS USED AS REFERENCE.

Sketched by: MUNAH AHMED Scale: Not to scale Date: 22/03/2021

# MALDIVES LAND AND SURVEY AUTHORITY

MINISTRY OF HOUSING AND INFRASTRUCTURE

Office (PABX): +(960) 3004300, Fax: +(960) 3004254

Ameenee Magu, Maafannu, Male', 20392, Maldives.

Email: survey@housing.gov.mv

Web: www. surveyofmaldives.gov.mv



<b>CONTROL POINT DETAILS</b>		<b>Station Number</b>	<b>PSM5801</b>
<b>Coordinate Information</b>			
<b>Geodetic</b>		<b>Grid</b>	
<b>WGS 84</b>		<b>UTM Zone 43</b>	
Lat:	<b>N4° 18' 19.8653"</b>	E:	<b>334283.046m</b>
Long:	<b>E73° 30' 24.2112"</b>	N:	<b>476060.254m</b>
Ellp Height:	<b>-92.905m</b>	Orth Height:	<b>1.291m MSL</b>
<b>Island Name:</b>	<b>AANUGAN'DUFINOLHU</b>	<b>Date:</b>	<b>22/03/2021</b>

*Monument description & method of survey:*

Type A Monument - Urban Configuration.

Finish level is Approx. 100mm below ground.

GNSS Static Observation for more than 1hour 45mins and post processed to reduce coordinates.

Vertical height transferred by static processed vertical coordinate from PSM5797.

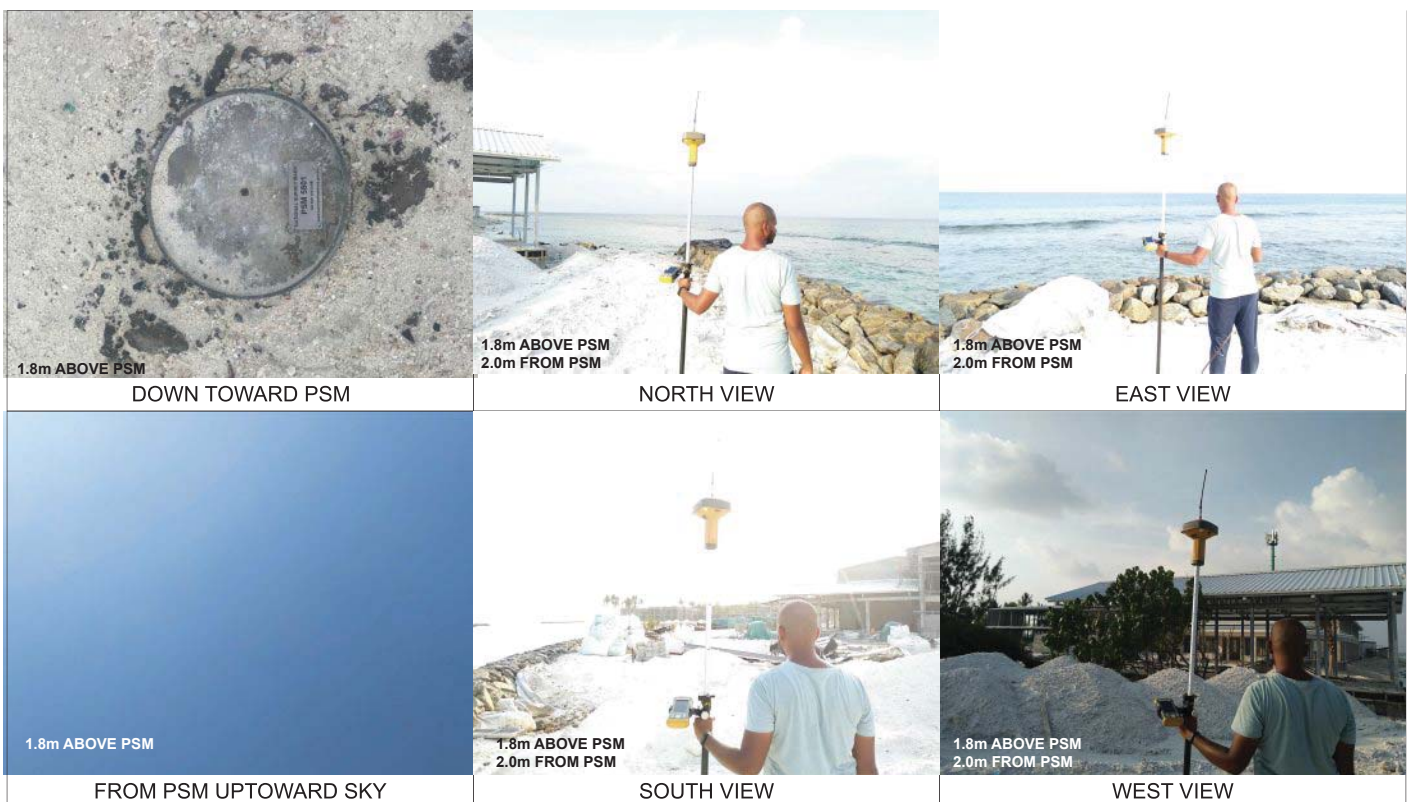
Vertical Datum (MSL) was adjusted by transferring MSL datum to PSM 5797 by RTK observation to water level.

PSM 5797 is in Aanugan'duhuraa in the same lagoon.

*General site condition & access:*

- Easy Acces.
- Open area with open sky.
- 2.4m from East Revetment behind back of house

**Owner: AQUA BLUE INVESTMENT PVT LTD**

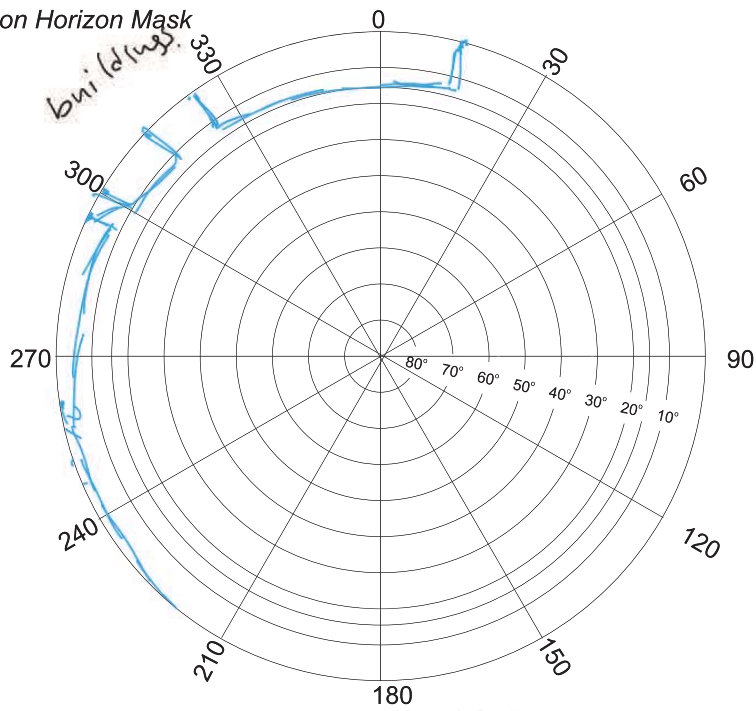


**SITE INFORMATION**

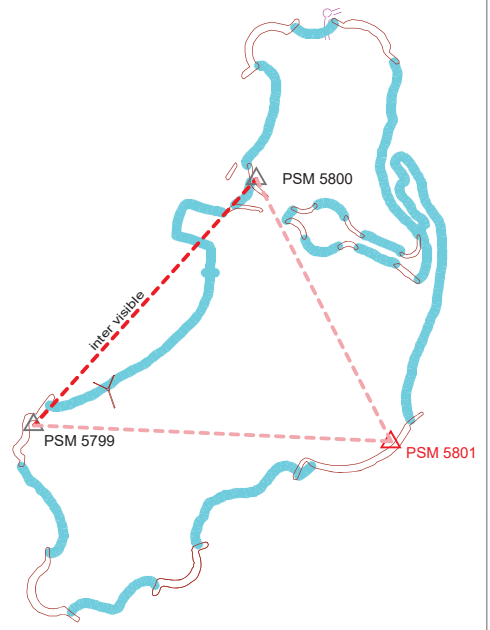
Station Number

PSM 5801

Station Horizon Mask

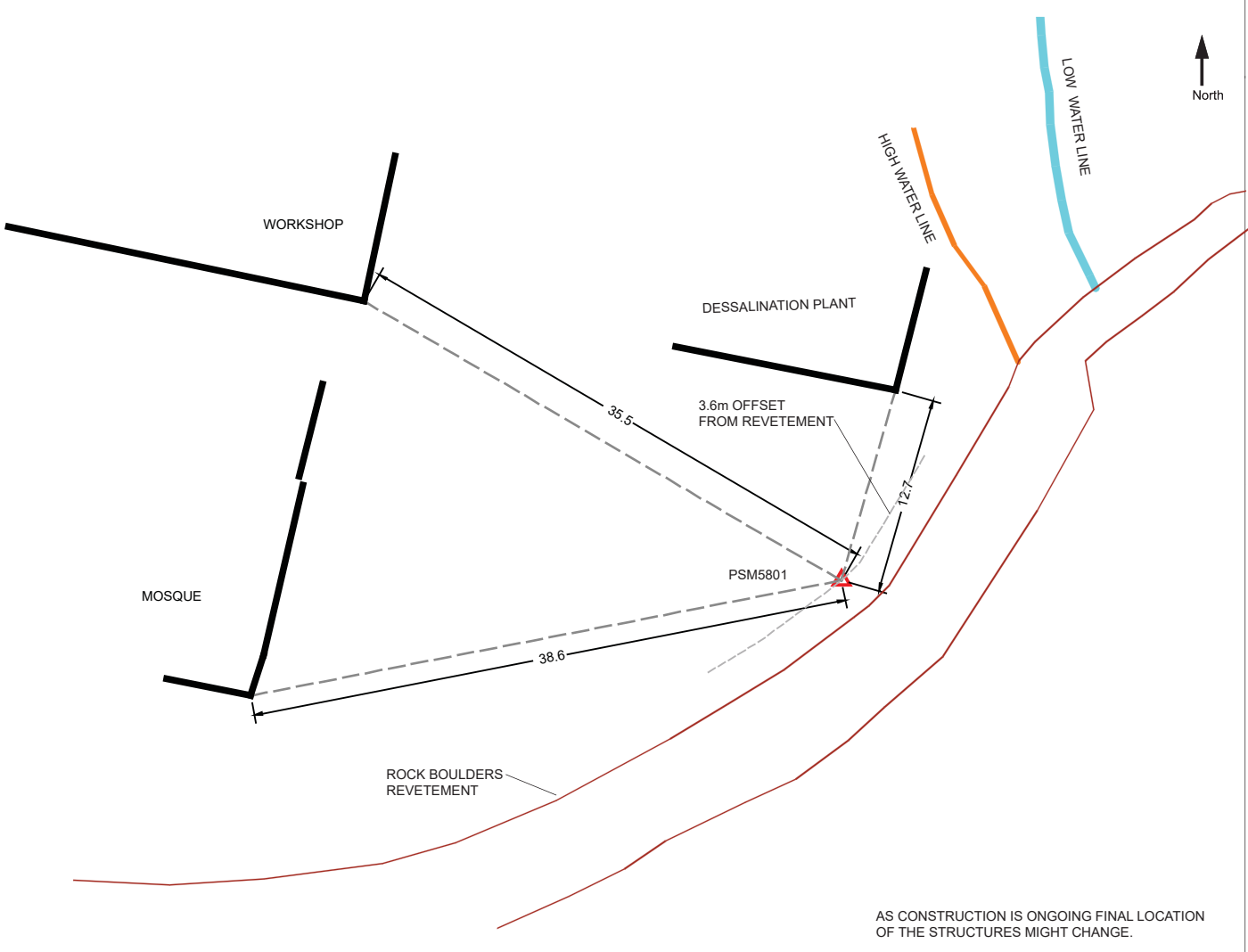


Locality



Height above Marker that horizon was mapped from 1.80 m

Magnetic Declination \_\_\_\_\_  
 Declination applied to this figure?  
 Yes  No



AS CONSTRUCTION IS ONGOING FINAL LOCATION OF THE STRUCTURES MIGHT CHANGE.

Sketched by: MUNAH AHMED Scale: Not to scale

Date: 22/03/2021